

Advantages of E-mail

Electronic mail (E-mail) has become mission critical for most successful businesses. E-mail allows for fast and concise communication between multiple users and provides an efficient method of information dissemination. In most cases, e-mail is cheaper, faster and more reliable than long distance phone calls and postal deliveries.

E-mail instantly generates a written record of interactions between senders. Mail can be sorted and filtered automatically before even being opened to filter out junk mail or prioritize important information. E-mail has revolutionized the manner in which business is conducted.

MailEnable Solutions

MailEnable provides a suite of products to suit a full range of requirements; from home users to ISP's.

Standard Edition – Ideal for users who need the power and stability of a high performance mail server, but require only basic email services such as POP, SMTP, standard spam protection, list-server and auto-responders.

Professional Edition – For small to medium sized organizations. Professional Edition adds important functionality eg; IMAP4, HTTPMail, web mail, 3rd party Anti-virus support, enhanced anti-spam including SPF and global filtering.

Enterprise Edition – Designed for large-scale organizations (eg: ISP's). Enterprise Edition includes clustering support, database configuration store, enhanced web mail, service selection per mailbox, Bayesian filtering, and optimised services for speed and scalability.

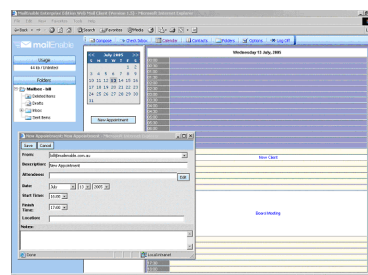
Why choose MailEnable?

Advantages for Users

MailEnable Mail Servers provide a messaging infrastructure that enhances and increases productivity for the end user. The features are designed to facilitate ease of communication by making the process fast, accessible, customizable and simple to use. For example;

Access e-mail anywhere – Web mail is an email service that uses a web browser as an interface allowing for the viewing, sending, receiving, editing and deleting of email, just as you would with your standard email clients such as Outlook or Eudora.

Web mail is ideal for mobile users because it allows you to access your email from anywhere, anytime with any computer connected to the Internet.



Customised look and feel – Web mail 'skins' allow you to redesign the look and feel of your web mail and web administration. MailEnable has a skin library available on-line, or you can customize your own look. By changing colors, icons, buttons, images and backgrounds, you can even brand web mail with your company logo for a consistent corporate look.

The IMAP4 Advantage – IMAP4 (a messaging protocol) has distinct advantages over POP because it allows you to manage multiple folders on the server. Mail can be accessed from different machines, as the mail is hosted on the server (unlike POP which usually deletes mail from the server after being accessed) and allows the user to just download message headers and envelope information, leaving the body of the message on the server, until the user selects the email to download. This is useful when operating over slow speed dial-up connections.

IMAP4 can break up and download specific parts of a multi-part e-mail message (MIME). This means that instead of having to wait for an email with attachments to download, you can select only the text portion to download, and leave the attachments on the server.

Centralized information store - Public folders are visible to all IMAP users and enable information to be stored centrally and made available to everyone on the system. Public folders are ideal for storing documentation on policy and procedures or internal memos, making them readily available for all system users.

Keep informed and up-to-date - MailEnable contains a list server that enables people to subscribe and unsubscribe to a list. A list is an online discussion group or information mail-out, where emails are sent out to all the members. People are able to post to the list, and the server will duplicate their email and send it out to all the members.

The List Server allows you to manage your own subscription based distribution lists. Interested parties can subscribe to lists based on interest areas either as a moderated or un-moderated list.

Spam prevention – MailEnable employs several methods of blocking or filtering spam, so that the user or the mail system never receives junk email. MailEnable features message and content filtering, allow/block lists, SPF, Bayesian filtering and several other features for stopping unwanted e-mails being delivered.

MailEnable Pty. Ltd

486 Neerim Road • Murrumbidgee, VIC, 3163 • AUSTRALIA

T: +613 9569 0772 +613 9530 4066

sales@mailenable.com • www.mailenable.com

Integration

MailEnable integrates with several third party applications.

Integrated Authentication

Use Windows Authentication as well as MailEnable's inbuilt authentication. Create mailboxes automatically as users successfully authenticate using Windows Credentials.

Anti-virus products

Anti-virus applications that integrate with MailEnable include:

- > F-Prot
- > Sophos
- > McAfee VirusScan
- > Norton AntiVirus Corporate Edition
- > Norman Virus Control
- > Panda Antivirus Command Line
- > Grisoft AVG

Other command line scanners can also be configured

Control Panel Software

MailEnable integrates with several control panel applications including:

- > Helm
- > Plesk
- > Hosting Controller
- > Hosting Accelerator
- > Ensim
- > and more...



More information

To find out more about MailEnable, please visit our website at:

<http://www.mailenable.com>

Advantages for System Administrators

Administration is a necessary cost of operating MailEnable, or any mail server. MailEnable is designed in such a way to reduce the amount of time systems administrators spend managing the mail server. By providing the necessary tools and resources to support systems administrators, they can manage the system efficiently and productively. For example;

Comprehensive Inbuilt error and diagnostic reporting - MailEnable's SMTP Connector provides W3C logging to record service usage, Activity logging to record system activity and Debug Logging to provide low-level information on system activity.

Easy to install and configure - The intuitive administration interface means that you will have your mail server up and running in minutes. With an easy-to-use Microsoft Management console application, setting up mail services is a simple procedure.

Scalability - MailEnable allows clustering and storing configuration data in Microsoft SQL/MySQL for greater scalability. Clustering means you can redundantly configure your mail servers to increase system reliability and uptime. The cluster management tools within Enterprise Edition allow you to couple servers and manage them as cluster nodes.

Comprehensive and responsive support - including user forums, online searchable knowledge base, full product manuals and access to experienced technical support people.

Extensive resource libraries - MailEnable provides an extensive library of free resources and utilities, COM components and add ins. MailEnable boasts a comprehensive developer API. The API facilitates extensions and integration with other applications.

Advanced and flexible content filtering - Set up rules to control your mail content. With content filters you can append text to messages, quarantine messages, move or delete messages based on content. Filters can be configured at a mailbox and server level.

Accessibility - Remote administration allows remote access to settings, user accounts and logs via a Windows client.

General Infrastructure Advantages

The final area for consideration is in cost savings related to infrastructure. Infrastructure costs in this context includes such things as hardware, software, administration costs and server downtime. Server costs generally mean productivity losses for end users. MailEnable can generate cost savings for your organisation in terms of;

Reduced hardware requirements - MailEnable has low system requirements. The platform is lean and robust designed as an enterprise level mail solution, with only modest system requirements

Non-restrictive licensing - There is no per seat licensing on any product. MailEnable allows you to host unlimited domains and users. Therefore, as your organisation grows, the cost of your licensing remains the same.

Maximised uptime - MailEnable's open and modular architecture and service isolation promotes uptime because the system is comprised of different logical processes. For example, if one service should fail, other services are not necessarily affected.

Scalability - MailEnable is designed to grow with your organisation, the product range allows you to upscale your operation without having to change vendors.